

2019-2020 Annual Report to the Community

United Way of Western Connecticut fights for the health, education, and financial stability of every person in Greater Danbury, Greater New Milford, and Stamford, with a focus on hard-working, struggling households that we call **ALICE®** (**A**sset **L**imited, **I**ncome **C**onstrained, **E**mployed).

GIVE. ADVOCATE. VOLUNTEER.



United Way
of Western Connecticut

Living United to come back stronger



Kimberly A. Morgan



Isabel Almeida



Cheryl Bakewell

During difficult times, the human instinct is always to come together. But this past year, it was hard to come together when it was safer to social distance, and pervasive social and political issues seem to have driven many in our country even further apart.

At United Way of Western Connecticut, we are determined to find a way to turn things around, to truly **LIVE UNITED** by bringing people together to help the hardworking people we serve, those we call **ALICE**[®] (**A**sset **L**imited, **I**ncome **C**onstrained, **E**mployed). We want to emerge from these trying times not just intact, but **STRONGER** than we were before.

The people hit hardest by this pandemic are the people we've been focused on for the past five years, hardworking ALICE individuals and families who live paycheck to paycheck.

This report describes all the ways we supported ALICE throughout the past year. Despite improvements in the economy since March of 2020, many still face endless days of juggling work and child care, empty shelves, or the possibility of eviction. To help ease their burdens we focus on:

- Getting affordable healthy food on their tables
- Providing safe and affordable child care
- Making it possible to start saving for the next emergency, and maybe even for a better future.

Perhaps one silver lining to all of this is a greater public attention focused on the needs of ALICE, our essential workers. That attention may wane as we ease back into normalcy. But, at United Way of Western Connecticut, we will stay the course. Because ALICE is who we fight for every day, we know that by making ALICE stronger, we make our communities STRONGER.

One of the bright spots this year has been our progress on Prosperity Digital Marketplace (see page 17), which we launched as a nonprofit subsidiary, with Kim Morgan, CEO, at the helm. Isabel Almeida stepped up to take over the day-to-day operations of the organization as President. Together with our Board Chair, Cheryl Bakewell, and with all our board and council members, we strive forward together.

Take the time to review our accomplishments for 2019-2020 and join us in building resiliency in our community and lifting up ALICE individuals and families. Your support has never been more needed and valued.

Handwritten signature of Kimberly A. Morgan in black ink.

Kimberly A. Morgan
Chief Executive Officer

Handwritten signature of Isabel Almeida in black ink.

Isabel Almeida
President

Handwritten signature of Cheryl Bakewell in black ink.

Cheryl Bakewell
Bakewell & Mulhare LLC
Chair

RESPONSE TO THE COVID-19 PANDEMIC

When the economy shut down, we knew that our hardworking neighbors who live paycheck to paycheck would be hit the hardest. These are the people we call **ALICE®** (**A**sset **L**imited, **I**ncome **C**onstrained, **E**mployed). We delivered cash and food to their families in the first few weeks of the crisis, and mobilized volunteers to deliver resources to the homebound and those who lost jobs and wages.

Across the state, United Way of Western Connecticut was at the forefront of efforts to provide relief, implementing the technology that enabled people to download funds to their smartphones to buy groceries and other basic needs.



FINANCIAL ASSISTANCE

3,400+ people across the state received \$200 in cash assistance, totaling \$680,00+, from local and statewide United Way COVID relief funds

FOOD ASSISTANCE

640+ people were eligible for \$20 of free, fresh produce and other discounts through June 2020 through our Healthy Savings program.

Nearly **\$50,000** of fresh produce was provided to struggling families through this program

VOLUNTEERS MOBILIZED

95+ volunteers mobilized in Stamford and Danbury to deliver food and necessities to seniors, the homebound, and low-income families in need of food

200+ calls made to Stamford seniors to make sure their needs were being met

CHILD CARE SUPPORT

35 family child care providers receive support in obtaining Paycheck Protection Program (PPP) loans through Cora's Kids. They also receive Personal Protective Equipment (PPE) and other supplies to reopen safely

INFORMATION PROVIDED

3,000+ visitors to our COVID-19 Resource Page on our website

Almost **400** food guides downloaded

Childhood Success

ALL children deserve a brighter future, regardless of their family's economic or social circumstances. United Way of Western Connecticut helps to provide a strong foundation for children's early learning while supporting quality after-school and enrichment activities.

Everyone's lives were disrupted by the challenges of COVID-19. But perhaps no one experienced the disruptions to daily life more acutely than children and their parents. With school and work schedules completely upended, children faced uncertainty and instability as their child care situations changed and their schooling became remote overnight. Parents scrambled to patch together work and care arrangements, while keeping everyone sane and safe.

United Way of Western Connecticut understood the importance of stabilizing child care and early education providers, so that once everyone went back to work, safe, quality care would be available. We also helped to shore up child care centers that lost income, while continuing to provide funding so children in low-income families could receive care and enrichment activities at an affordable price.

IMPACT

183 BENEFIT FROM THE ALICE ENRICHMENT FUND, WHICH PAYS \$300 TOWARD THE COST OF AN ACTIVITY PER CHILD, PER YEAR FOR QUALIFYING FAMILIES

35

FAMILY CHILD CARE PROVIDERS RECEIVED SUPPORT DURING THE PANDEMIC

2,700+

CHILDREN RECEIVE AFFORDABLE, QUALITY EARLY CARE OR AFTER-SCHOOL CARE



Helping struggling families provide a strong learning foundation for their children



IN DANBURY, a struggling single mom with a preschooler and two school age children is able to send all three to a quality center, thanks to United Way funding. In addition to caring for her children when she is not working, the center connected the mother with other United Way resources, including Healthy Savings and the Giving Fund, which helped her repair her car so she had reliable transportation. The staff said all of these benefits allow her to “hold her head high for her family, not only for necessities such as food, rent, and electricity, but also leaves room to enjoy quality family time and experiences with her family that is essential for everyone’s well being.”



IN STAMFORD, a United Way funded child care center provided the support and resources a family needed when their son, George, was born with Down Syndrome. The family was confused and grieving, but the first thing the center personnel said to the parents was “Congratulations, you have a beautiful baby boy!” The parents smiled and said that no one had said that to them. The staff established a bond of trust and showed the mother how to feed the baby and how to encourage the child’s development at home. George thrived, and the center is now helping him to prepare for entrance to the Stamford Public Schools. The child care staff said, “Our goal was to show the family what a wonderful baby they had and to help them enjoy him.”



IN SOUTHERN LITCHFIELD COUNTY, a single mother who is confined to a wheelchair is able to send her 10-year-old daughter, Rose, to clay, drawing, and pottery wheel classes with the help of funding from United Way of Western Connecticut. She writes that since attending this after-school program “I have seen big impacts in Rose’s work. Her new skills and methods have helped with her other studies and everyday life, too—such as planning her projects and working through until the end, with more confidence with each project.” The mother also reports that she was able to adapt some of the classes as part of a homeschool curriculum.

Food Security

ALL people should have access to healthy food, no matter what their income. From the youngest child to those who are aging on a budget, everyone should be able to nourish their bodies to keep them strong and to lead a vital, fulfilling life.

This year's pandemic created a food crisis for almost everyone who lives on a tight budget. But children, who were eating a lot of meals in schools before they closed, and the elderly, who were afraid to go out to grocery stores, were perhaps most affected.

We worked with community partners in Stamford as part of the Stamford Together initiative to help get food and necessities to the elderly in that community. We worked with Hillside Food Outreach in Danbury, providing volunteers and funds to get food to the homebound and quarantined. We also worked with Boehringer Ingelheim, Sodexo, and the Danbury Public Schools to get food to low-income families at Danbury's public housing complexes. And in New Milford, we worked with Camella's Cupboard, the Senior Center, and the New Milford Food Bank to help meet demand.

The food pantries that are members of our Danbury and Stamford Food Collaboratives

were inundated with additional requests, so we provided more than \$45,000 in mini-grants to help them serve additional clients.

The expansion of our own Healthy Savings program meant that 640 households were able to receive fresh produce at the grocery store. At the height of the pandemic,

we doubled the value of produce normally provided, so that members of this program could receive \$20 of free, fresh produce weekly. Beginning in June 2020, they are receiving up to \$10 in free produce for every \$10 they purchase, and can save as much on \$150 monthly on produce and other healthy food items.



IMPACT

\$50,000+

WORTH OF FREE, FRESH PRODUCE
DISTRIBUTED THROUGH HEALTHY SAVINGS

95+

VOLUNTEERS MOBILIZED
TO DISTRIBUTE FOOD
DURING THE PANDEMIC

\$45,000+

IN MINI-GRANTS MADE
TO FOOD PANTRIES
ACROSS OUR REGION

Latesha struggles to provide healthy food, despite working hard

Latesha and her husband have two children in elementary school. They both work—Latesha works full time as a client manager at an accounting management company, and her husband works in the grocery industry. His hours vary and are unpredictable, but he typically works 20 to 30 hours per week.

Despite working hard, Latesha often depends on food pantries to feed their children. She said she has learned to make paying rent the number one priority in her budget, sometimes leaving her a little short on money for food. This was especially true when her husband was laid off of work for a period of time.

“I filled penny rolls and pawned jewelry to come up with the rent,” she says. Last year, her husband had to make a visit to the hospital emergency room, and they are still paying off the bill.

When COVID-19 closed her children’s school and her offices, Latesha found herself trying to juggle the demands of her job—conference calls, deadlines, communicating with clients—while also helping her children with their daily coursework, and assisting her kids when they had a meltdown or conflicts with each other.



“It was so stressful,” she said. “I often broke down and cried. I explained to the teachers and my boss that we had to take two days off for our mental health.”

She uses United Way of Western Connecticut’s Healthy Savings program to help her receive discounts on groceries, providing her with up to \$10 in free produce for every \$20 she purchases, in addition to discounts on other healthy foods. She also uses United Way’s ALICE Enrichment Fund to pay for out-of-school activities for her children.

Latesha and her husband count on United Way of Western Connecticut’s programs to make their lives just a little easier during a very stressful time.

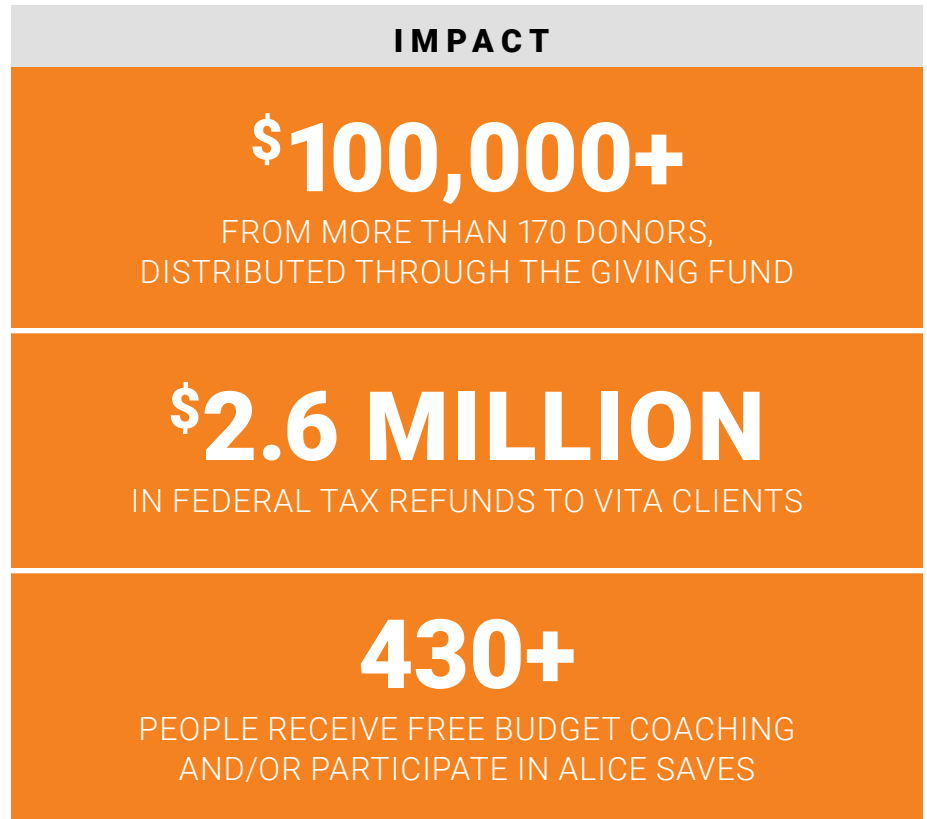
Financial Stability

ALL people who work hard should be able to pay their bills and plan for a better future. United Way of Western Connecticut provides tools that help lower wage workers save money and create a plan to reach their financial goals.

The precarious economic situation of ALICE workers was laid bare by the COVID-19 pandemic. Without any savings, they struggled to pay bills, buy food, and pay their rents or mortgages when they lost jobs or wages. At United Way of Western Connecticut, we don't want this to happen again.

Our ALICE Saves program brings together two key strategies for greater financial stability: matched savings and budget coaching. Through SaverLife, people who save at least \$20 per month can earn \$10 in matched savings over 6 months, and, most important, get in the savings habit. TrustPlus provides free budget coaching to ALICE Saves participants on issues such as household budgeting, managing loans and debt, handling financial emergencies, and avoiding payday loans.

We also fund budget coaching through agency partners who provide guidance to people who need to get back on their feet after a divorce, domestic violence, or abuse situations.



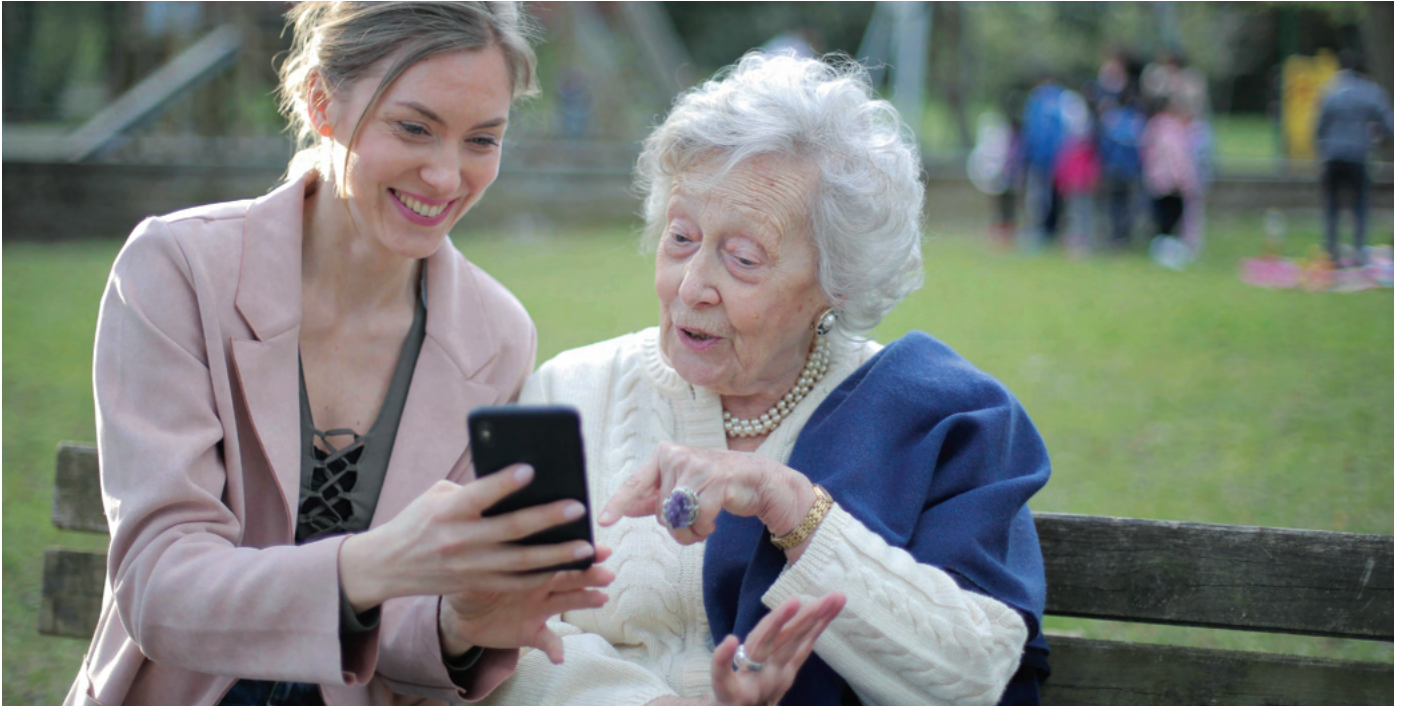
People who simply find themselves unemployed or underemployed and needing new skills or a new career can also get help.

Free tax preparation services like Volunteer Income Tax Assistance (VITA) and MyFreeTaxes save ALICE on tax preparation fees, while ensuring that they get the maximum legal refund and benefit from the Earned Income Tax Credit and

other credits and deductions they qualify for.

Finally, the annual Giving Fund can be a life saver for those who find themselves needing a helping hand due to illness, job loss, or other unforeseen life situations. We distributed funds to 34 people in Greater Danbury last year during the holiday season, to help them get through an emergency.

Mary Rose's retirement funds were dwindling quickly



Every year, at the start of the holiday season, we reach out to social service agencies and nonprofits to collect anonymous stories of clients in dire need due to difficult life situations—people who just need some short-term financial help to get them through a crisis. These become our Giving Fund stories. Publicized in the Danbury News-Times, the Giving Fund gives residents in greater Danbury an opportunity to help their neighbors in need during the holidays.

This past year, we were particularly touched by a story submitted by Bethel Social Services about Mary Rose, a senior citizen living on her own and battling cancer. Her retirement funds were dwindling quickly as she spent money on medical co-payments and deductibles, gas to get to doctors' appointments, and expensive nutritional shakes. Megan Alworth-Khazadian, the Director of Bethel Social Services, described Mary Rose as a "sweetheart," and a helpful,

positive person despite dealing with the symptoms of her disease and treatments, including muscle loss, fatigue, and nausea.

Mary Rose had no money left for basics like clothes or home repairs. She wrote us a kind note that said: "You cannot imagine the extent of my happiness to be the recipient of such a generous gift! I put the money toward a much-needed water heater, a tank of oil, and an insurance premium. Your generosity will not be overlooked and I wanted to say thank you."

Megan Alworth-Kazadian, Bethel's Director of Social Services said, "United Way has been my biggest support since I began my job here. The resources you provide to our community have a great impact on the recipients."

Through the Giving Fund, and in all the work we do, we are honored to connect people in need with those who have the resources to help them.

Volunteerism

ALL community members should have the opportunity to contribute to their cities and towns in a hands-on way. At United Way of Western Connecticut, we always work hard to provide meaningful volunteer opportunities to employees at local companies and all area residents. But this past spring and summer, we had to respond quickly as community needs for food became urgent and safety concerns became paramount.

Our year in volunteerism began in the “normal” way with an innovative and fun STEM Fair in Stamford, the traditional Stuff

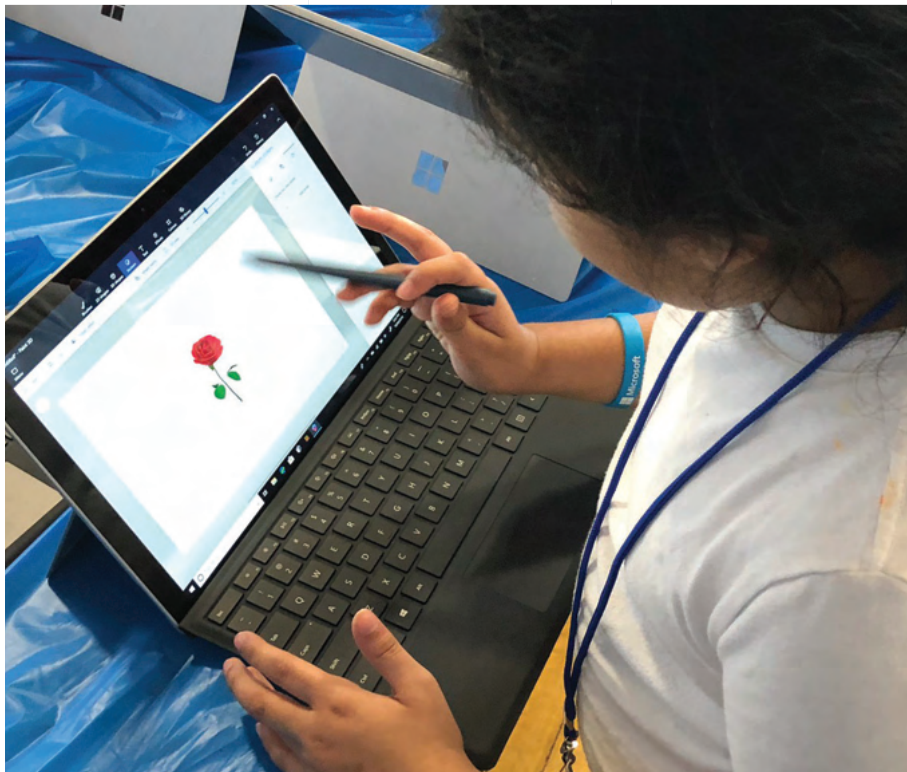
the Gazebo event in Southern Litchfield County (now called Operation Thanksgiving), and the creation and distribution

of Winter Care Kits and Martin Luther King Day Literacy Kits in greater Danbury.

But when spring of 2020 brought the pandemic, we had to pivot our volunteer efforts. We responded quickly to community needs for home deliveries of groceries and other necessities, worked with partners to address the greater need for food in families whose children were now home all day and missing school meals, and collected more food for local pantries, whose shelves became bare as families lost jobs and wages.

Sadly, this past year saw the need for us to sunset our highly successful Youth Volunteer Corps. After 10 years of encouraging community service in young people across our region, YVC operations ended in March of 2020 due to the relocation of our exceptional coordinator, Morgan Browne, and the need to redirect funds to more urgent programs.

IMPACT		
<p>1,883</p> <p>VOLUNTEERS MOBILIZED IN THE PAST YEAR</p>	<p>8,137</p> <p>VOLUNTEER HOURS PROVIDED TO THE COMMUNITY</p>	<p>\$260,000</p> <p>VALUE OF VOLUNTEER TIME PROVIDED TO THE COMMUNITIES WE SERVE</p>



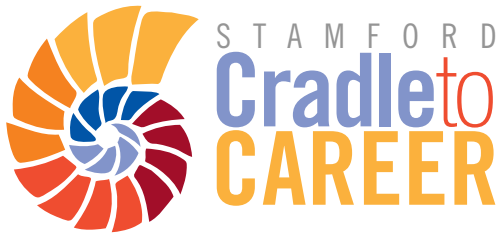
Turning on a dime when the pandemic hit required nimble and safe volunteer mobilization



IN STAMFORD, staff from the Cradle to Career initiative were redeployed to work on Stamford Together, the city's 5-prong response effort to the pandemic. They registered and deployed City of Stamford volunteers to assist with the delivery of meals and other immediate needs to seniors and quarantined residents. They also helped to place volunteers in food pantries, since many of those volunteers were over the age of 60.

IN GREATER DANBURY, we worked with the Danbury Public Schools, Boehringer Ingelheim, and Sodexo to deploy 60+ volunteers to deliver meals donated from Boehringer Ingelheim's cafeteria to low-income housing sites in the city. The meals were greatly appreciated by families who usually depend on school meals to help feed their children. We also recruited and deployed volunteers to work with Hillside Food Outreach to meet an exponential increase in demand for home delivery of groceries.

IN SOUTHERN LITCHFIELD COUNTY, before the pandemic hit, Kimberly Clark employees had been collecting items for our Community Baby Shower. When the event had to be canceled we quickly pivoted and donated Kimberly Clark's 41 cases of Huggies diapers, 30 cases of Huggies wipes, and 20 cases of Cottonelle bath tissue to our Cora's Kids Licensed Child Care providers. UPS pitched in to transport the items. Staff also helped to coordinate food relief efforts with town social service agencies and local partners.



We believe that ALL Stamford children deserve equity and excellence in education, from cradle to career.

United Way of Western Connecticut provides backbone support to **Stamford Cradle to Career (SC2C)**. SC2C is a member of the **StriveTogether** national non-profit network of nearly 70 communities that have adopted the collective impact model. A community-wide partnership with more than 60 active members, it aligns resources to measurably improve the lives of Stamford children.

Despite the unexpected challenges of the past year, SC2C was able to:

- Obtain a grant to pilot the **Sparkler** app, which provides a mobile platform for parents to track and support their young child’s learning and development.
- Bring together after-school program providers and Stamford Public School staff to provide after-school and summer programming to support literacy for approximately 65 students.
- Pilot **School Climate** and

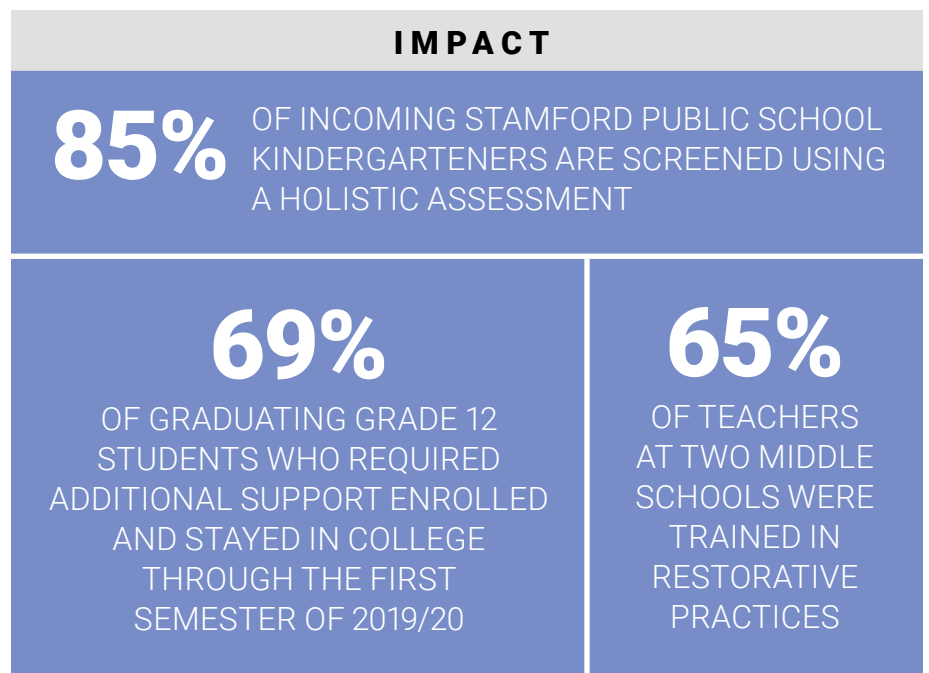
Restorative Practices

trainings, to emphasize supportive relationships for better student outcomes. Eleven trainings were held with 561 attendees.

- Launch a **Bridge to College** program to help Stamford high school graduating seniors navigate the complexities of financial aid applications, meeting deadlines, and registering for classes to ensure that first-generation and low-income college students complete the last steps necessary to make it to college during the summer after their senior year.

During the COVID-19 crisis, SC2C worked with the City of Stamford and Stamford Public Schools to assist with coordinating volunteer food delivery, open a child care center for hospital workers, and provide books for children. SC2C has also become a guiding voice in critical conversations about ending institutional and systemic racism in Stamford and beyond.

All of SC2C’s work is accomplished in partnership with the more than 60 organizations that are members of this collaborative.



Bridge to College Helps Stamford Students Overcome Obstacles to College Enrollment

In the summer of 2019, Stamford Cradle to Career launched an innovative program to ensure that graduating Stamford seniors who intended to go to college in the fall actually got there. Its purpose is to address a phenomenon called “summer melt” – when students fall by the wayside during the summer, never register for classes, and never make it to college.

“Summer melt’ is most likely to happen with students who are the first in their families to go to college, or who are new to this country. The obstacles can be just too overwhelming. The complexities of completing financial aid forms, meeting deadlines, submitting required paperwork, and selecting and registering for classes can be too difficult to navigate on your own. In the past, as many as 37% of Stamford high school seniors who intended to attend Norwalk Community College did not matriculate in the fall.

“Even the most prepared families can find the college entrance process daunting,” said Bridget Fox, President of Stamford Cradle to Career. “But if your family is new to this country, or your parents never attended college, the hurdles can be high indeed. This program gives students the assistance they need at a crucial juncture—the months leading up to college enrollment in the fall after their high school senior year.”

Bridge to College sends text messages to hundreds of recent graduates from Stamford high schools, with reminders about key steps and deadlines in the college enrollment process. Counselors work more intensely with about 80



students, offering one-on-one meetings to keep students on track.

The program is supported by Synchrony, Stamford Public Schools, and the Stamford Public Education Foundation, as well as by an anonymous donor.

“The step in the process that I needed the most help with was FASFA. If it wasn’t for the help, I would not have been able to attend school this fall,” explained one Stamford High School Class of 2019 graduate and a current Norwalk Community College student.

Another student from last year’s program said, “Bridge to College should continue to help the students who need help going to college and helping them choose the right path. The most helpful part of the program was Ms. Andrena (a counselor). She took the time to help me, and she was extremely patient.”



DanburyWORKS is a city-wide collaborative linking services across the community to break down barriers to economic engagement and lasting change in the city of Danbury.

United Way of Western Connecticut provides backbone support to **DanburyWORKS**, a community group working to improve equity and the quality of life in Danbury. Funded by the Boston Federal Reserve's Working Cities Challenge Grant, DanburyWORKS has a goal of reducing the poverty rate by 5% within immigrant communities and communities of color in Danbury within 10 years.

DanburyWORKS links services across the community to make it easier for households in need to access the tools necessary to build a better life for their families, and a stronger economic force for our city. Members include local organizations, businesses, social service agencies, government officials, educational institutions, and residents—all of whom are committed to making change by reducing economic barriers to immigrants and people of color

IMPACT

82

PEOPLE
ATTENDED ESL CLASSES
WITH FREE CHILD CARE

400

PEOPLE
ATTENDED THE PARTY
ON THE PATIO



Accomplishments over the past year include:

Gathering 400 families at the Party on the Patio on August 22, 2019. This event at the Danbury Police Station provided back to school supplies and backpacks to 400 families. Fifteen Danbury community organizations gave out information and supplies.

Joining forces with the Greater Danbury Chamber of Commerce to support Race and Equity trainings for Connecticut Young Professionals, both in Danbury and across the state.

Hosting three Neighbor Nights. After the pandemic led to all virtual gatherings, DanburyWORKS partnered with the Danbury Public Schools to host three virtual Neighbor Nights on the topic “Dismantling Racism in the City of Danbury.” The Neighbor Nights have been attended by more than 100 community members, including State Senator Julie Kushner, the Attorney General, the Executive Director of CT Against Gun Violence, and the Superintendent of the Danbury Public Schools.

Working with the Complete Count committee in Danbury and the Federal Census Bureau to host a joint call to help demystify some of the concerns that community members had around filling out the U.S. Census. The goal was to help reach the community in downtown Danbury that has been identified as a hard to count census tract.

Conducting ESL classes with free child care. Four community organizations partnered on this project, which was funded by a CDBG grant from the City of Danbury: Community Action Agency of Western Connecticut, Danbury Library, Families Network of Western Connecticut, and Grassroots Academy

Laying the groundwork with Amazon to host informational sessions about obtaining employment at their new distribution facility in Danbury, in partnership with the American Job Center and the CT Department of Labor.





In October of 2019, United Way of Western Connecticut made a dramatic move forward in our commitment to serve ALICE individuals and families through the use of technology.

The nonprofit subsidiary Prosperity Digital Marketplace, LLC, was formed to build a digital platform to connect ALICE to social services and other resources that can improve their lives. It will also link businesses and donors directly to people who are struggling financially.

Prosperi-Key will launch in June 2021 in Connecticut, New York, and Ohio.

Prosperi-Key will:

- Provide income verification to determine if a household is ALICE, using a standardized formula developed by United Way of Northern New Jersey and Rutgers. ***No such tool currently exists, and it will be invaluable in assessing and qualifying households for benefits and programs.***
- Provide a one stop site for ALICE households to find resources for educational and vocational training, health resources (healthy food access, prescription discounts, health screenings, etc.), and other resources they are eligible for in their community. A flex-fund payment system is being developed similar to the one used successfully by the Connecticut United Ways COVID-19 Response Fund and the ALICE Emergency Fund.
- Offer a **marketplace** where businesses and donors can provide services and discounts to ALICE households in their communities (for example, in-kind dental services).

We're proud to be leading with this innovative solution, which has gained national attention and support, and we are excited to be breaking new ground in the ways hardworking, struggling families can find solutions to the very real challenges they face every day.

United Way of Western Connecticut has invested \$1 million to build Prosperi-Key and is actively fundraising for an additional \$3 million to launch the entire platform. To date, significant financial support is being provided by Synchrony and AXA XL. The platform will eventually generate revenue for United Ways participating as hubs across the country.

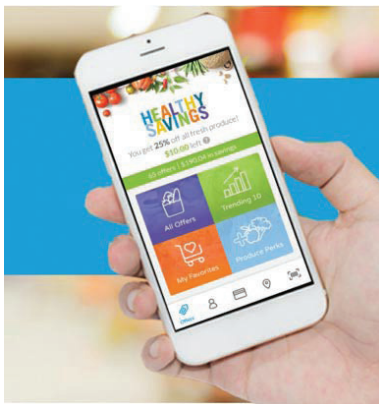
Called **Prosperi-Key**, this digital platform is being developed in very close consultation with an **ALICE Advisory Board**. The board includes 18 ALICE households who share their direct, lived experience to ensure that the technology platform will be responsive to the needs of its target customer. Additionally, an **Innovation and Technology Advisory Board** was formed with technology experts from the business, government, and nonprofit sectors.

Looking Ahead

As our communities struggle to come back from the pandemic and strive for a world where there is equity and opportunity for all, United Way of Western Connecticut commits to demonstrating leadership and innovation. Please join us in our work!

COVID-19 RESILIENCY GRANTS

Nonprofits in our 15-town footprint continue to serve an increasing number of clients who have been affected by the health and economic consequences of the pandemic. These nonprofits have heroically risen to the challenge, despite often not being able to serve clients face-to-face, hold fundraisers, or rely on volunteers. In response to their needs, United Way has issued a Request For Proposals (RFP) that will provide nonprofits with up to \$20,000 to address increased demand and/or help them reorganize in ways that allow them to work better in a post-pandemic world. Our communities need strong nonprofits to serve the vulnerable. These grants represent our commitment to keeping a durable safety net in Western Connecticut.



EXPANSION OF THE HEALTHY SAVINGS PROGRAM

During the pandemic, we realized that the Healthy Savings Program we launched in 2019 was a great way to get food to struggling families when emergencies arose. With the flip of a switch, we were able to increase the food benefit to program participants during the height of the pandemic, allowing them to obtain up to \$20 of free, fresh produce at the grocery store each week. Since the launch of the program, we have put more than \$88,000 of fresh produce on the tables of lower-income families. Our goal is to expand this program to 1,200 households by the end of 2021.

A CONTINUING COMMITMENT TO RACIAL EQUITY AND INCLUSION

Since the death of George Floyd in May of 2020, calls for racial justice have resounded across our nation. Among our initiatives, Stamford Cradle to Career has partnered with Stamford Stands Against Racism to provide informative, educational presentations and discussions to raise awareness about equity issues in that city. United Way of Western Connecticut is committed to expanding awareness about race issues across all of our communities, while also taking a look inward to ensure that our boards, councils, and staff reflect diversity and practice inclusion.

STAMFORD CRADLE TO CAREER COMMUNITY RACIAL JUSTICE SERIES
in partnership with Stamford Stands Against Racism

Second Session:
Towards Community Healing: Uncovering and Addressing Racial Trauma

Presented by **Dr. Kenneth Hardy**
Thursday, November 12, 1-3 PM
Pre-registration required

REGISTER HERE

Kenneth W. Hardy, Ph.D. is the President of the Elmsberg Academy for Social Justice, and Director of the Elmsberg Institute for Relationships in New York City. He is also a Professor of Family Therapy at Drexel University in Philadelphia, Pennsylvania.

Dr. Hardy has provided Diversity and Racial Equity training and consultation to the enterprise for Health and Human Services agencies as well as a host of educational institutions. He is a frequent workshop presenter, trainer, and consultant on the topics of cultural and racial diversity, trauma and oppression.

Dr. Hardy has published peer-reviewed and is the author of numerous articles and book chapters. He has co-authored the following books: *Interventions and Family Therapy: From Who Must? Clinical Interventions to Break the Cycle of Abuse and Neglect*; and *Interventions and Family Therapy: From Culture and Gender to Clinical Practice*. He has also co-authored the book *Culturally Sensitive Supervision and Training: Clinical Perspectives and Practical Applications*.

He is also featured in several therapy vignettes as well as a documentary devoted to slavery. His vignette "The Psychological Resilience of Slavery" has been well received by both the professional and lay communities for serving as a catalyst to promote conversations about race relationships.

Dr. Hardy has received considerable accolades for the contributions that his publications and vignettes have made toward challenging our field to think critically about issues of diversity, trauma, and oppression. He has been a frequent contributor to the popular media and has been featured on the Oprah Winfrey Show, Goodie TV, and 20/20, the Discovery Health Channel, and ABC Nightline. Dr. Hardy maintains a practice in New York, New York.

HONORING OUR LEGACY DONORS

United Way of Western Connecticut would like to recognize the following donors and volunteers whom we lost during the past year.

Harold Spratt

Harold Spratt's involvement with United Way of Western Connecticut over the course of 50 years changed many lives for the better, especially the lives of children. Through donations during his lifetime exceeding \$3 million, he enabled the launch of important initiatives, such as Imagination Library, which provided free books to more than 10,000 children over 10 years, and Strong Heart Healthy Children, which funded three regional programs to combat childhood obesity. In 2017, a generous donation from Harold funded the highly successful Cora's Kids initiative, named after Harold's wife. This initiative has greatly increased the accessibility and affordability of quality child care in Greater Danbury. In 2018, Harold joined United Way's Legacy society by making a generous bequest to our organization in his will. Harold passed away in June of 2019 at the age of 90, leaving a legacy of philanthropy that will have ripple effects for years to come.



Harold Spratt is pictured fourth from left at the launch of the Cora's Kids initiative in April 2018.

Jerry Murphy

Jerry Murphy was described by all as a “true patriot.” He served in the US Navy during the Vietnam War and in the following decades. His military awards included the Meritorious Service Medal, the Joint Service Commendation Medal, the Navy Commendation Medal, and the Legion of Merit. Upon his retirement from the Navy, he moved with his wife Susan to Brookfield, where he served as First Selectman from 2003 to 2007 and was involved in many community service activities, including the Brookfield Lions Club and the Brookfield VFW.



Jerry was a decades-long volunteer with United Way of Western Connecticut. He served for many years on the Northern Fairfield County Community Council, where his contributions were greatly valued and appreciated. He will be greatly missed. We are thankful that his family remembered our organization upon his passing.

Agnes Briggs

Agnes Briggs was a talented artist who worked during World War II in the advertising department of a Los Angeles department store. The contemporary Ridgefield home that she and her husband, Robert Fawcett, designed and built became a salon visited by some of the most interesting people of their day. After Mr. Fawcett died, Agnes married Austin Briggs and moved to Paris. After his passing she returned to Connecticut. She had a gift for friendship and a zest for life. Mrs. Briggs died at the age of 93. We are very grateful to her for remembering United Way of Western Connecticut in her will.

Ernest T. Moorey

Ernest Moorey was a Redding resident who passed away in May of 2020 at the age of 105. Ernest was a Lieutenant in the United States Navy, serving during World War II. He was truly proud to serve his country and be called a veteran. He held a bachelor's and a master's degree in Mechanical Engineering. All who knew him were captivated by his ability to share his memories and stories. But the greatest story Ernie would ever tell was his own love story. He married Josephine Kreiner Moorey in May of 1952. The energy and love between them could light up any room. Ernie and Josie enjoyed 64 years of marriage. Some of their favorite hobbies were travelling, gardening, and enjoying the great outdoors. We are most grateful that Mr. Moorey remembered United Way of Western Connecticut in his will.

CORPORATE PHILANTHROPIC PARTNERS

THANK YOU to all our corporate partners who support United Way through a workplace campaign, special event, or corporate gift.

Listed below are our corporate partners in descending order of donation. **Bolded** corporations are those that generously made a corporate gift and/or matched their employees' contribution during the campaign year of 2019-2020.

Deloitte	Northern Trust	Trident (An ITW Company)	Comerica Bank & Trust
Synchrony	KeyBank	Delta Air Lines	Structure Tone Inc
Webster Bank	CironeFriedberg, LLP	Cigna	Dow Chemical Company
PricewaterhouseCoopers LLP	PNC Bank	CohnReznick	UPS Retirees
Genworth	Del-Tron Precision, Inc.	Macy's	McGladrey & Pullen, LLP
Pitney Bowes	Cartus	Bank of America	Oracle
Kimberly-Clark	IBM Retirees	Comcast	Walmart
Wells Fargo	Belimo	Photronics	Thomaston Savings Bank
Union Savings Bank	Target	Allstate	Catholic Charities of Fairfield County
Eversource	AT&T	Microsoft	Abbott Labs
UPS	Aquarion Water Company	Marshalls	Raymour & Flanigan Furniture
Fairfield County Bank	Post University	Automatic Data Processing, Inc.	Verizon
Newtown Savings Bank	Chromatics	Travelers Group	HomeGoods
Rain Carbon Inc.	ACE Group (Chubb)	Monro Muffler Brake & Service	Prudential Financial Inc
Branson Ultrasonics	Eaton Corp.-Aerospace Sensing & Controls Division	TJ Maxx	North Highland
IBM	John Hancock Financial Services	Green Chimneys Children's Services, Inc.	Kodak Alaris
Principal Financial Group	Caterpillar Inc.	Korn Ferry	TRC Global Mobility, Inc.
Nationwide	Colgate Palmolive	McKinsey & Company	Best Buy
Duracell, Inc.	New Milford Public Schools	Guardian Life Insurance Co. of America	JCPenney
Barden Foundation, Inc.	City of Stamford	MacDermid Incorporated	Dimeo Construction Company
Linde	L.L.Bean	Hubbard-Hall Inc.	Eversource Retirees
PepsiCo	Rose & Kiernan	Daikin Applied	Connecticut Counseling Centers Inc.
Brown Brothers Harriman & Co.	First County Bank	Eli Lilly & Company	Manpower Group
Savings Bank of Danbury	Legg Mason & Co., LLC	Joel Barlow High School	The Hartford Financial Services Group
People's United Bank	The Network Support Co.	Amica	Right Management Consulting Inc.
Costco Wholesale	Preferred Brands International	Town of New Milford	Verrill Dana LLP
General Motors	Memry Corporation	Kent Center School	The Coca-Cola Company
BMO Harris Bank	US Bank	LaBella Associates	
FedEx Corporation	UnitedHealth Group	Stanley Engineered Fastening	
GE	Boys & Girls Club of Stamford, Inc.	Energizer (Edgewell)	
Pfizer	Citigroup	MCCA	
Thomson Reuters	Motel Hotel Associates Inc	City of Danbury Housing Authority	
Stop & Shop	Exelon		
Citizens Bank			



GRANT FUNDERS

Albert and Helen Meserve Memorial Foundation
 Anonymous (2)
 Bank of America
 Boehringer Ingelheim Cares Foundation
 Charter Oak Communities
 City of Danbury
 City of Stamford
 Collins Aerospace Helping Hand Fund
 Community Fund of Darien
 Connecticut Council for Philanthropy
 Connecticut Office of Early Childhood
 Connecticut Department of Housing
 Fairfield County's Community Foundation
 Federal Reserve Bank of Boston - Working Cities Challenge
 Genworth Foundation
 George A. & Grace L. Long Foundation,
 Bank of America, N.A., Co-Trustee
 The Goodnow Fund
 Grossman Family Foundation
 Herbert and Nell Singer Foundation
 IBM

JPMorgan Chase
 Legg Mason
 Lone Pine Foundation
 New Canaan Community Foundation
 New Milford Rotary Foundation
 Newtown Savings Bank
 The PCLB Foundation
 Pitney Bowes Foundation
 Richard Davoud Donchian Foundation
 The Ridgefield Thrift Shop
 St. John's Community Foundation
 Stamford Health Foundation
 Stamford Public Schools
 Stamford Rotary Trust Fund
 StriveTogether
 Synchrony Foundation
 Town of Newtown
 Tufts Health Plan Foundation
 Western Connecticut State University
 Youth Volunteer Corps

DONORS

Listed below are our leadership donors for the 2019-2020 campaign year. These generous donors are leading the way to measurable, long-term change in the lives of our neighbors throughout Western Connecticut.



The Tocqueville Society recognizes Alexis de Tocqueville's admiration for our country's spirit of volunteer effort for the common good. Its members are recognized for the generous contribution of \$10,000 or more in a regional membership roster and in the annual national registry.

La Societe Nationale

Dr. Peter Buck

Ordre d'Egalite

**Annual Contribution
\$50,000-\$74,999**

Agnes Briggs CRU
Theresa Golden

Ordre de Liberte

**Annual Contribution
\$25,000-\$49,999**

Bruce and Linda Koe
John and Victoria Myers
William Platt
Thomas Powers

Ordre de Consul

**Annual Contribution
\$15,000-\$24,999**

Anonymous (1)
Daniel and Ann Marie Colby
John Coykendall
Nicholas and Anita Donofrio
Henry Greig
Michael Lorenzo
Paul Reszutek
Cary Stier
Kevin Stone
Daniel Sunderland

Membres de la Société

**Annual Contribution
\$10,000-\$14,999**

Anonymous (5)
Mark and Patti Beckwith
Michael Berrigan
John Ciulla and Ms. Erin Fuller
Shelley Duncan
Clifford Fox
David Golub and Kathryn Emmett
Michael Maria
Kieran and Deborah McGrath
Aaron and Jaimie Meyer
Robert Morris
Denis Mulcahy
John and Joanne Patrick
John and Sandy Rankin
Alexander Schillaci
Daniel and Kelly Sheehan
T. Glenn Stastny
Gerard and Mary Jo Sweeney
Robert and Caren Tucker
Eliot Wadsworth

DONORS

GOLD

Annual Contribution
\$5,000-\$9,000

Anonymous (6)
David Acampora
Pablito Almira
Theresa Baker
Paul and Kimberly Bruce
Marilyn Dillman
Andrew Doherty
Robert Goldberg
Gary Goldring
Richard Goligoski
Ronald and Paula Herren
Abdallah and Priscilla Igram
Margaret Keane
Eric Knachel
Raymond and Ellen Kurkij
James Lane
Robert and Loire Leavitt
Cynthia and Philip Merkle
Jonathan Mothner
Vaziyad Nagarwalla
Benjamin and Mo Li Perlman
Amy Reina
Tom Rosamilia and Karen Coblens
Peter and Kathy Sachs
Courtney Sachtleben
Adrian and Jenny Schwartz
John Teltsch
Addison Unangst
John Vidal

SILVER

Annual Contribution
\$2,500-\$4,999

Anonymous (10)
Raed and Arlene Ajami
Victor and Isabel Almeida
Martin and Mary Anderson
Lorene Bora
Aaron Brown
Eileen Cahill
Mark and Heather Catalano
Julia Cooper
Michael and Susanne DeMilt
Michael Dziczkowski
Robin Gallagher
Michael Gorter
Robert Grosso
Christopher Haggerty
John Keller
Frank and Frances Kelly
James and Laura Kennedy
Daniel Kirberger
Helen Kobee
Timothy Kolber
Catherine Levatino
Kathleen Malone
Marie Mollo
Kevin and Kim Morgan
Christine Oliver
Michael Puleo
Kristen Putnam
Barbara Seith
Jane Stanton
Sean Sullivan
Chris Thompson
Debra Verbeke
Kathy Vogt
Ken and Rita Weinstein
Paul Whyntott
Joseph Zale

continued on next page



DONORS

BRONZE

Annual Contribution \$1,000-\$2,499

Anonymous (42)	Tom Eichenberger	Ronald and Jo-Ann Lee
Tracey Alston	Samuel and Marilyn Eisnitz	Michael Lennon
Willis Altman	Michael Elliott	William and Casey Levene
Steven and Claudette Ames	Robert and Elaine Erichson	Roger and Carla Levien
Dave Anderson	Frederik Erikson	Marla Lewis
Teresa Arnold	Barbara Feinson	Mark Lieb
Zeid Ayer	John Field	Senator Joseph and Hadassah Lieberman
Charles Balocca	Michael Foscaldi	David Loftus
Clayton Bannock	Anthony Foti	Paul Lombardo
Michael Barber	Dan and Bridget Fox	Margery Longstreet
Shannon Beatty	Katherine Francis	Jerry and Deborah Longyear
Charles Bennett	Douglas Frattaroli	Adrian Louw
Jennifer Birdseye	Bruce Friedman	Peter Maher and Caren Nelson
Robert Bollinger	James and Patricia Gareau	Michelina Mc Kiernan
Mark Bolton	Nicholas Gazetos and Melanie O'Brien	William McCarthy
Eric Boyd	Michael and Dorothy Giersch	Rebecca McCray
Eugene and Nancy Brandon	Guy and Janice Gioielli	Joseph and Frances McCusker
Alexander Brandorff	Ram Gondi	Jeffrey and Luanne McDonough
Tamara Brown	Donald Gustafson	BettyLou McKeon
Gerald Buszta	Liben Hailu	John and Susan Melillo
Lindsey Cameron	Nancy Hall	Faisal Mir
Denise Canavan	Robert Hengelbrok	Gary Miyashiro and Rose Tamura
Anthony Canonaco	John Hoffman	Robert and Margaret Moore
Alan Chapple	Mary-Ann Houser	James Moran
Kevin Cocchiola	Robert and Judith Hurwich	John Morrison
Peter and Marianne Coffin	Penn Johnson	Stuart Morrison
Victor Cohn	Robert Jones	Joseph Morrissey
Robert Comerford	Jennifer Kaplan	Christine Natale
Charles Cooks	Denise Kaufman	P.K. Natrajan
Andrea Coreau	Kevin Kearns	Robert and Deborah Neiman
Karen Critelli	Margaux Kelley	Stephen Nitz
Mark Crowley	Patrick Kelley	John O'Connor
Nadine Devine	HyunSoo Kim	Mark Ortiz
Luis Diez	Catherine Kortlandt	Antimo Palmieri
F. T. DiGaetano	Amy Krahn	Barbara Pels
Greg Dubin	Manu Krishnan	Bernie Pfeifer
Annmarie Durkin	Frank Kunst	Emily Pogers
Les Edwards	Janet Layton	John and Julie Poklemba

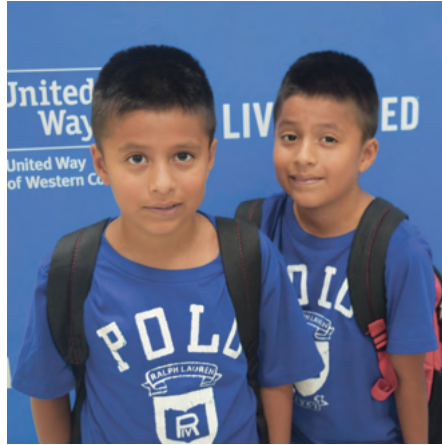
continued on next page

DONORS

BRONZE

Annual Contribution
\$1,000-\$2,499

Eugene Pollastro
Donna Ramey
Bobby Reese
Eli and Maureen Reynolds
Catherine Riordan
Betty Roberts
George and Theresa Rough
Kelly Saltzgaber
Mark Santoro
Neenu Saoji
Edwin Savitsky
Nikki Schutt
Victoria Scofield
Peter Scotch
Ling-Fang Shae
Sara Shaldjian
Michael and Annie Shepherd
Kathleen Shoztic
Robert and Harriet Simon
David and Lisa Skaug
Timothy Smith
Paul-Erik Sorensen
Robert Stone
David Swerdloff and Shelley Taylor
Ronald Tardiff
James Teer
Dominick Tomanelli
John Tracey
Martin Vahsen
Cindy Vaupel
Daria Veccia
Oskar Vldes
David Ward
Lauren Whitney
Heidi Winslow
Robert and Christine Young



BOARD AND COMMITTEES

Served During the 2019-20 Fiscal Year

BOARD OF DIRECTORS

Cynthia Merkle,

*Chair, through
December 2019*
Union Savings Bank

Cheryl Bakewell,

Chair, January 2020
Bakewell & Mulhare LLC

Michael Shepherd,

Vice Chair, January 2020
Genworth

Eric Duenwald,

Treasurer
Synchrony

Ken Weinstein

Secretary, January 2020
Newtown Savings Bank

Tracey Alston

Eversource

Keith Betts

Western CT State University

Paul Bruce

Union Savings Bank

George Garrett

Deloitte

Steve Liker

SLC Community Volunteer

Kurosh L. Marjani *

End of term December 2019

Wofsey, Rosen, Kweskin &
Kuriansky, LLP

Aaron Meyer

Stamford Community
Volunteer

Mark Ouellette

Pitney Bowes

Dawn Reshen-Doty

Benay Enterprises, Inc.

Antonio Santiago

Naugatuck Valley
Community College

Chloe Tashjian-Soares

Tash & CO.

Kevin Walston

Danbury Public Schools

Natasha Williams

N-Touch Strategies

Candy Yeager

Stamford Community
Volunteer

Lisa Zana

Shipman & Goodwin LLP

COMMUNITY COUNCILS

NORTHERN FAIRFIELD COUNTY COMMUNITY COUNCIL

Keith Betts
Mathew Cassavechia
Gigi Christel
Ron Herren
Mary-Ann Houser
Kim Karl
Samantha LaBonne
Gregg Manning
Ralph McIntosh, Jr.
Nelson Merchan
Jerry Murphy
MaryAnn Murtha
Katie Pearson
PJ Prunty
Sandra L. Rankin
Dawn Reshen-Doty
Jeff Ryer
Michael L. Stern
Bob E. Williams

SOUTHERN LITCHFIELD COUNTY COMMUNITY COUNCIL

Lynda Arnold
Cheryl Bakewell
Jennifer Birdseye
Barbara Dratch
Evan Hack
Steve Liker
Alex Rafoss
Tammy Reardon
Katherine Webster-O'Keefe
Amanda Wilson

STAMFORD COMMUNITY COUNCIL

Beulah Afoakwah-Abosi
Thomas J. Berta
Luis F. Diez
Leslie Glenn
Thomas Goggin
Kimberly Greene
Robin Guarnieri
George Herring
Carmen Hughes

Jerred Jones
Morgan Jensen
Sally Kelman
Valerie Lazzari
Kurosh L. Marjani
Laura Ozycz
Dave Pergola
George Schott
Dan Sheehan
John Vramo
Sandy Weinberg
Natasha Williams
Dudley Williams
Candy Yeager
Lisa Zana

COMMITTEES OF THE BOARD

FINANCE COMMITTEE

Cheryl Bakewell
Eric Duenwald
George Garrett
James Gareau
Frank Kelly

Cynthia Merkle
Bob E. Williams

GOVERNANCE COMMITTEE

Cheryl Bakewell
Eric Duenwald
George Garrett
Cindy Merkle
Ken Weinstein

HUMAN RESOURCES COMMITTEE

Paige Brewer
Mariann Van Buren
Keegan Drenosky
Ann Durkin
George Garrett
Maureen Kwilosz
Michael L. Stern
Chloe Tashjian-Soares

INITIATIVE VOLUNTEERS

BACK TO SCHOOL

NORTHERN FAIRFIELD COUNTY

Gigi Christel
Natalia Durante
Vanessa Freitas
Kim Karl
Greg Manning
Nicole Manning
Meghan McCurry
Diane Minck
Patty Moses
Dawn Reshen-Doty
Sara Shaldjian

SOUTHERN LITCHFIELD COUNTY

Christine Blonski
Walter Coffey
Francis Corleone
Joan Conn
Lizz Czaika
Susan Denino
Jeanne Faure
Nancy Macklin
Mike Scofield

STAMFORD

Women's Mentoring
Network Youth Group

COVID-19 REPOSE

FOOD DELIVERY WITH BOEHRINGER INGELHEIM AND SODEXO

Howard Adams
Lori & Lexi Amick
Helena Andrade
Wendy Aponte
Carole Bishop

Wilson Cardenas
Jessie Castro
Tracy Ciccone
Judy Coco
Ruth Dyer
Jacqueline Elam
Katharine El Hayak
Susan Foster
Lynne Given
Aaron Graham
John Grill
Jodi & Rick Henderson
Kathy Johnson
Teresa & Sam LaBarbera
Mary and Steve Levasseur
Tom McCabe, Junk King
Sophie Markind
Alexandra Mascioli
Kim McGettigan
Anne & Jim Meade
Christine Miller
Isabel Pasqualone
David Plaue
Wilson Rudinas
Alison Safford
Leia Selleck
Anne Shields
Christina Sweeney
Cristina & Sophia Taylor
Sophia Taylor
Jim Thorne
Valerie Trefny
Maria Tumang
Jennifer Warren
Tracey Warren
Renee Wheeler

FOOD DELIVERY WITH HILLSIDE FOOD OUTREACH

Lexi Amick

Lori Amick
Carole Bishop
Nancy Carroll
Karen & John Dischinger
Katharine El Hayak
Todd Gordon
Jennifer & James Gravgaard
John Grill
Cecilia Hall
Richard Kalriess
MonaLiza Louzada
Toni Miraldi
Tom McCabe
Amy Mellinger
David Plaue
Christine Pudelko & Family
Laila Rudinas
Carolann Ruiz
Lisa Stumpf
Maria Tumang
Tracey Warren
Andrea Witcher-Johnson
Chris & Frank Zarkowsky
Joe Zenevitch
Sian Watts

STAMFORD TOGETHER SENIOR OUTREACH VOLUNTEERS

Daniela Benitez
Fabio Calderon
Grace Choi
Geraldo Filgueiras
Keith Forster
Wendy Forster
Guy Freshwater
Heidi Gamble
Christopher Garcia
Benjamin Hu
Connor Jackson

Monica Jagtiani
Amber Johnston
Jean Joseph
Tristan Kelley
Jill Kralovenec
Mary Kraveske
Allyson Magda
Lauren Masi
Andrea Matero
Annie Mcardle
Michele Morck
Iman Morisset
Sasha Ono
Cathy Ostuw
Manoucheka Paulin
Corey Redlien
Mariella Rivedeneira
Rajalakshmi Sundararajan
Krysta Valentine

DAY OF ACTION COMMITTEE

NFC/SLC

Bob Brown
Dina Francisco-Pereira
Julie Poklemba
Norman Urquhart
William H. Valenti

EMERGENCY FOOD & SHELTER PROGRAM (EFSP)

DANBURY EXECUTIVE COMMITTEE

Lynn Fairfieldson
Maryann Houser
Patty Sghia
Phil Kallinkos

continued on next page

INITIATIVE VOLUNTEERS

EMERGENCY FOOD & SHELTER PROGRAM (EFSP)

STAMFORD EXECUTIVE COMMITTEE

Patty Burke
Joe Hickey
Mark Lingle
Nancy Schiffman

GRANT REVIEW TEAM VOLUNTEERS

NORTHERN FAIRFIELD COUNTY

Kasey Yakavonis
Mary Ann Murtha
Michael Stern
Sandra Rankin
Samantha LaBonne
Mary Ann Houser
Greg Manning
Ralph McIntosh
Nelson Merchan
Keith Betts
Ron Herren

SOUTHERN LITCHFIELD COUNTY

Barbara Dratch
Evan Hack
Katherine Webster-O'Keefe
Amanda Wilson

STAMFORD

Robin Guarnieri
George Herring
Carmen Hughes
George Schott
Candy Yeager
Thomas Berta
Kimberly Greene

FINANCIAL STABILITY REVIEWERS

Thomas Berta
Bill DeMichiel
John Rankin
Marcia Ghitnick
Cindy Mixcus

HEART OF GOLD SCHOLARSHIP COMMITTEE

Candy Yeager
Roberta Eichler
Valerie Lazzari
Luis Diez

MOBILE FOOD PANTRY VOLUNTEERS

SOUTHERN LITCHFIELD COUNTY

(through October 2019)

Stephanie Ansell
Pete Bass
Al Coelho
Joyce Collins
Diane D'Isidori
Elaine Donahue
Cynthia Forbes
Evan Hack
Steve Liker
Anda Meierovics
Tammy Reardon
Bob Rush
Andrea Rush
Mike Scofield
Katherine Webster-O'Keefe

READY, SET, LET'S READ!

Maryellen Baker
Martha Bishop
Nancy Burger
Joan Bybee
Gigi Christel
Art Cilley
Judy Haskins-Conde
Gail Doyle
Carol Elkin
Kim Green
Sally Kile
Ann McClellan
Antoinette McNichol
Peter Mulready
Lois Neville
Nancy Poliquin
Sandy Rankin
Karen Rozman
Barry Sobolewski
Bob Taborsak
Guy Wasko

RESEARCH VOLUNTEER

Mary-Ann Houser

SAVE OFFICE VOLUNTEER

Eleanor Gianfortune

STUFF THE GAZABO

Mike Scofield
Pete Bass
Nancy Macklin
Courtney Macklin
Tricia Gregory
Susan Denino
Christopher Cosgrove

YOUTH VOLUNTEERS CORPS

Alexis Johnson
Sarah Adams
Jamie Adams
Ritika Ahmed
Rohan Ahmed
Sarah Barta
Jordan Bido
Fayth Bodner
Madeline Bringman
Emma Bringman
Abigail Calame
Eva Carey
Rohan Carey
Samantha Cavalea
Dylan Cavalier
Timothy Chen
Val Chia
Molly Christel
Timothy Ciriello
Michael Cruz
Melina Cummings
Peter Dala
Sahil Dand
Charlie Doran
William Doran
Jack Dyson
Alexander Dzamko
Ella Egan

STEWARDS

Our staff members take pride in making a difference in Western Connecticut every day. Below are the those staff who supported our work during the 2019-2020 Campaign Year.

Kim Morgan

Chief Executive Officer

Isabel Almeida

President

Arlene Ajami

Chief Financial Officer

Lisa Alexander

Grants Resource
Development Manager

Tessa Coyne

Resource Development
Manager

Sofia Dupi

Digital Services
Implementation,
Marketing & Analysis

Sandra Ferreira

DanburyWORKS
Initiative Director

Bridget Fox

President Stamford Cradle to
Career & Chief Impact Officer

Katy Francis

Community Impact
Coordinator

Nicole Granskog

Community Impact
Coordinator

Morgan Browne

Special Projects Coordinator

Yolande Ford

Restorative
Practices Coordinator,
Stamford Cradle to Career

Surline Jolicoeur

Content Marketing
Coordinator

Caroline LaFleur

Associate Director,
Communications

Casey Levene

Vice President
Community Impact

Cara Mitchell

Food Policy Manager

Yvonne Mora

Benefits Specialist,
Cora's Kids & Early Childhood
Initiatives

Katy Murphy

Data Manager,
Stamford Cradle to Career

Elizabeth Quiñonez

Early Childhood
Initiative Manager

Stacy Schulman

Director, Corporate Relations

Victoria Scofield

Community Impact Coordinator

Tashi-Iyana Shuler-Drakes

Project Associate,
Stamford Cradle to Career

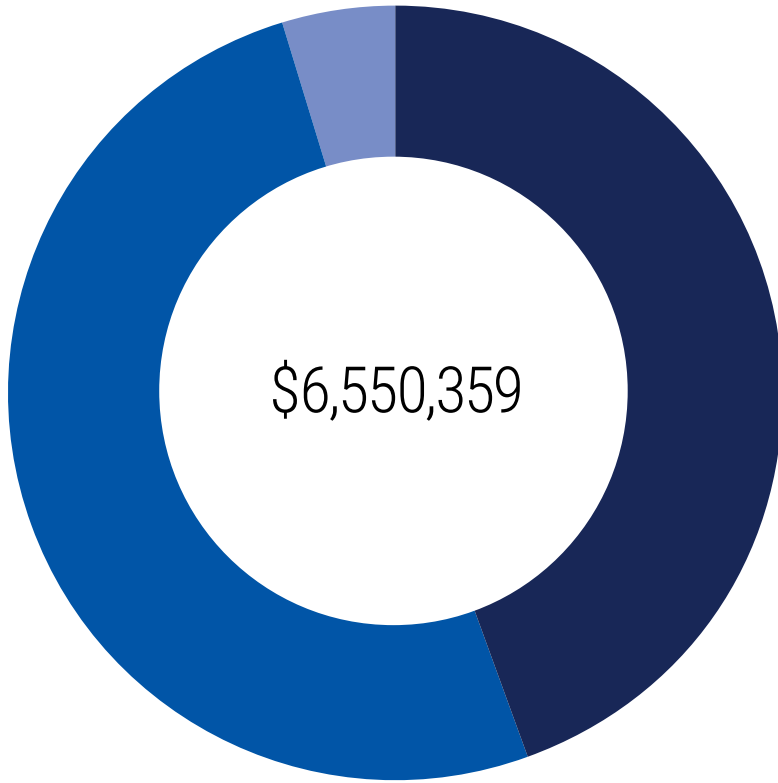
Jennifer Smith

Accounting Manager

Barry Sobolewski

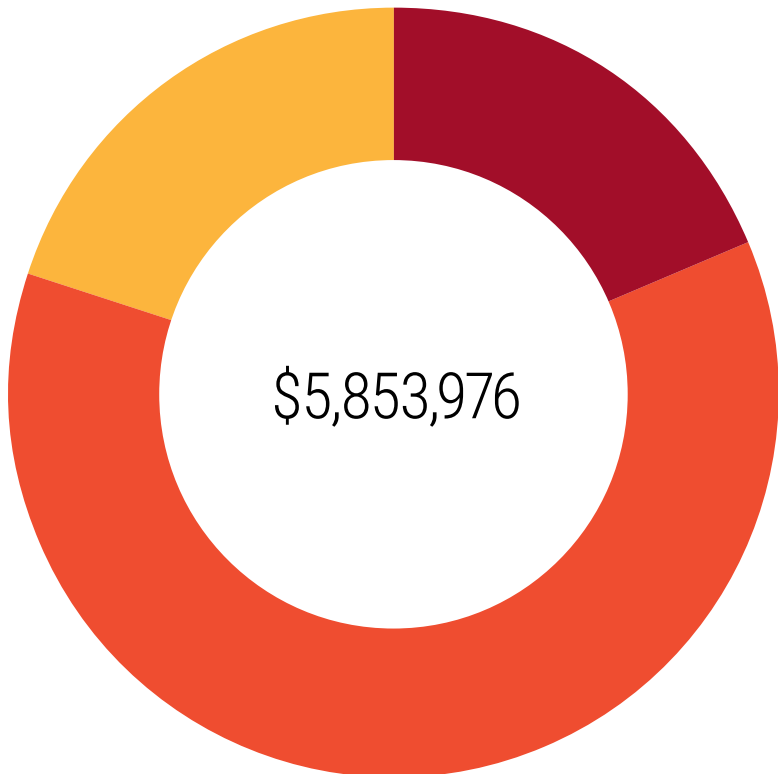
Director, Data Management
and IT Systems

FINANCIALS



2019-2020 REVENUE

- **CAMPAIGN REVENUE**
- **CONTRIBUTIONS AND GRANTS**
- **INVESTMENTS, IN-KIND AND OTHER**



2019-2020 EXPENSES

- **COMMUNITY IMPACT GRANTS AND OTHER DISTRIBUTIONS**
- **COMMUNITY IMPACT PROGRAMS AND SHARED SERVICES**
- **SUPPORTING SERVICES**

Fiscal year 2019-20.

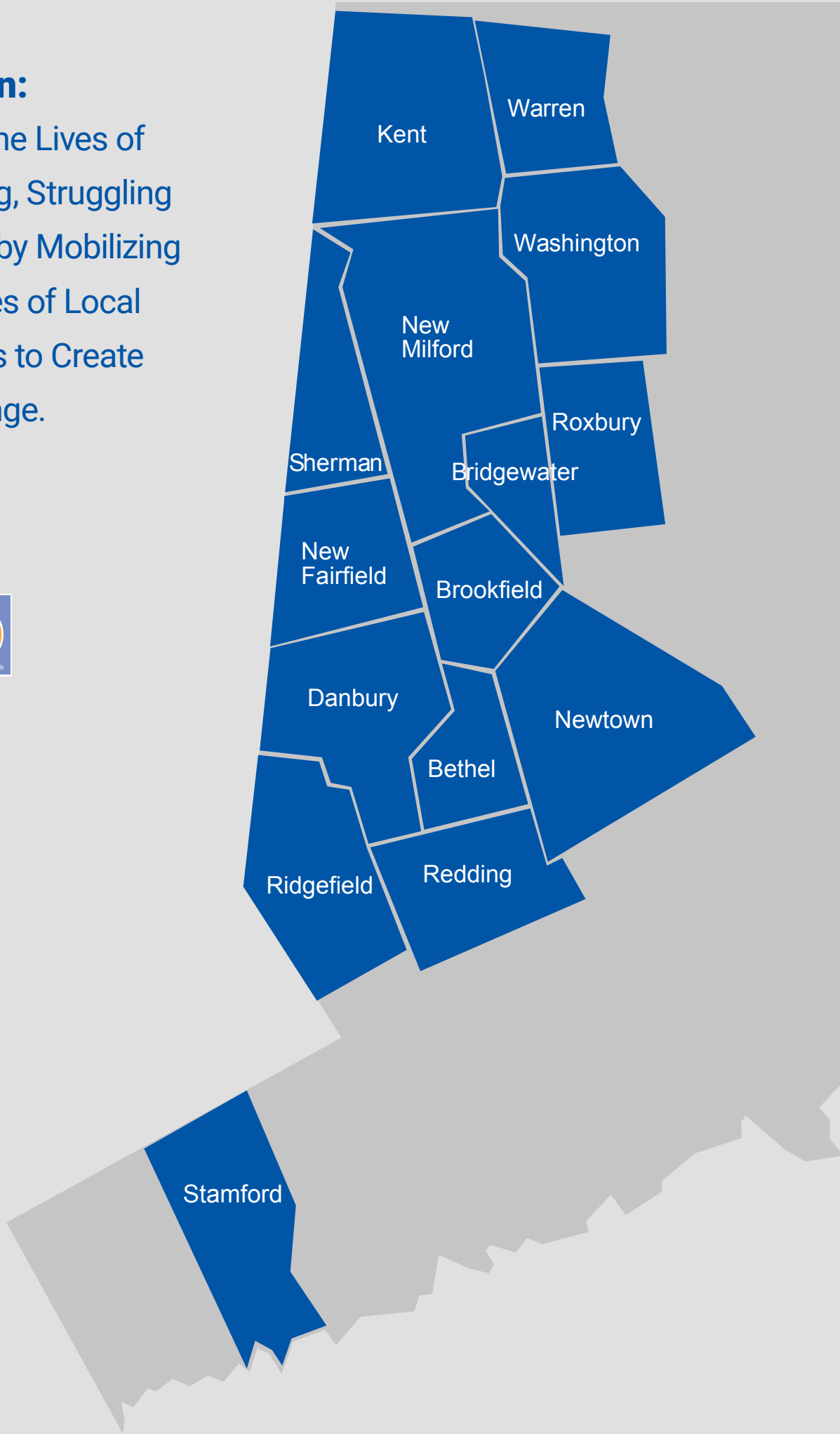
For our complete audited financial statements and Form 990, please visit www.uwwesternct.org/financials.

Our Mission:

To Improve the Lives of Hard-Working, Struggling Households by Mobilizing the Resources of Local Communities to Create Lasting Change.



United Way
of Western Connecticut





United to help hard-working, struggling families
GIVE. ADVOCATE. VOLUNTEER.

www.uwwesternct.org

NORTHERN FAIRFIELD COUNTY
301 Main Street, Suite 2-5
Danbury, CT 06810
203-792-5330

SOUTHERN LITCHFIELD COUNTY
24 Bank Street, P.O. Box 29
New Milford, CT 06776
860-354-8800

STAMFORD
1150 Summer Street
Stamford, CT 06905
203-348-7711



United Way
of Western Connecticut